

**Customer Care Solutions
RH-20 Series Transceivers**

**RH-20 Disassembly and
Assembly Instructions**

Table of Contents

	Page No
Disassembling RH-20	3
Assembling RH-20.....	10
Disassembly and Reassembly Instructions for Camera Module.....	17

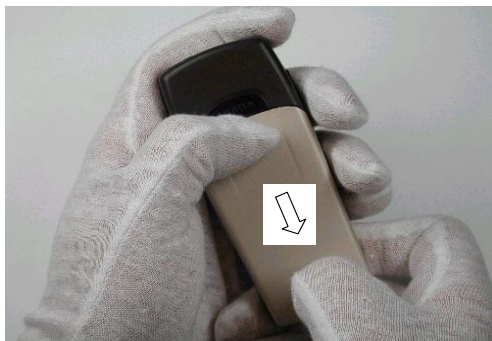
Disassembling RH-20

NOTE! Before you start

- Ensure that you are connected to the ESD wristband

NOTE! While disassembling/assembling the phone

- Use only the specified tools
- Be careful when handling sensitive components
- Avoid touching sensitive spring contacts connectors
- Protect the LCD with a foil whenever possible



1. Place the phone face down, press the Release Key and slide the battery cover downwards.



2. Flip gently the A-cover from down corner. Remove the A-cover.



3. Remove the Keymat.



4. Spread the B-cover from both sides until snaps inside will release it.



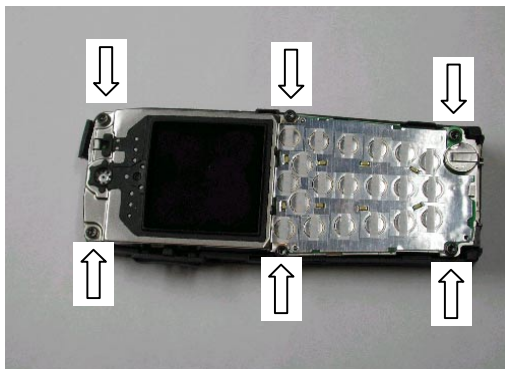
5. Remove the B-cover.



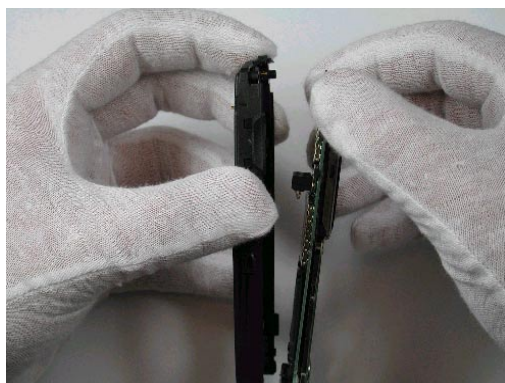
6. Remove the antenna

NOTE! Use only a specified opening tool, and be careful not to damage the mechanical parts.

Do not touch the antenna plate inside without gloves.



7. Remove the screws (6pcs) to get the module out from C-cover.

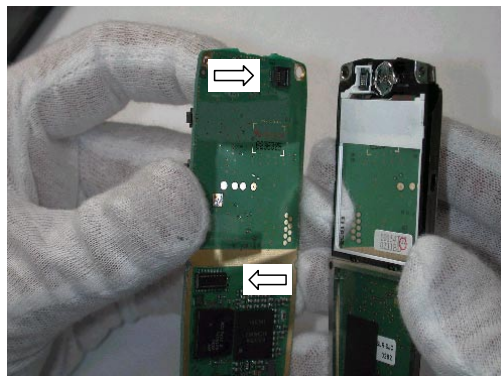
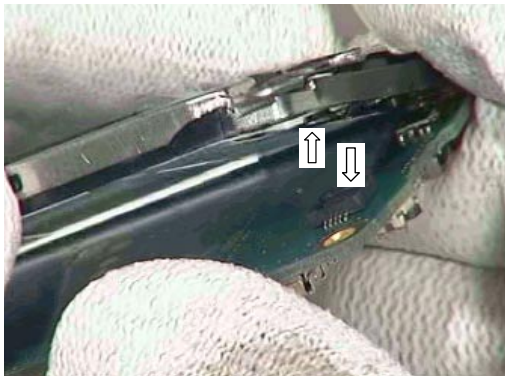


8. Remove the module out from the C-cover.

Note! Always use the specified tools.



9. Remove the UI module from the engine board.



NOTE! The UI module and the engine board are linked together by two board-to-board connectors. Be careful not to damage them.



10. Remove the microphone by pressing it from its edge, or take the tweezers between the frame and microphone and lift it out from the frame.



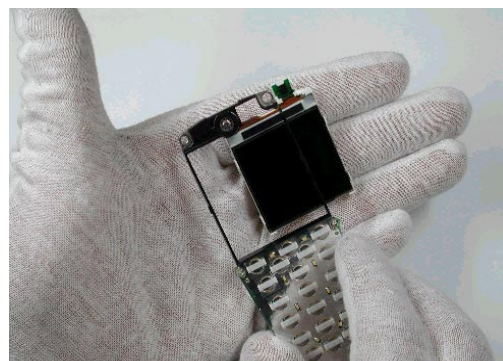
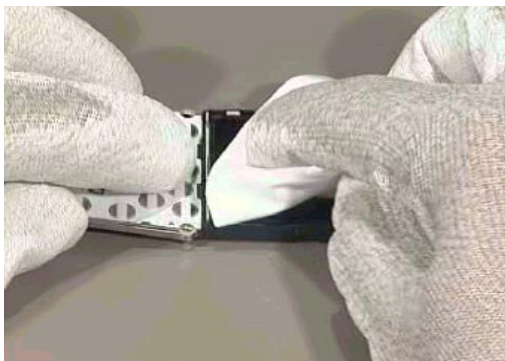
11. Remove the speaker by lifting it from the guiding pin.

NOTE! The speaker is attached into the frame by adhesive tape. Therefore, it may not loose easily.



12. To remove the Display shield, open the snaps from both sides by using the specified tool and remove the shield.

NOTE! Be careful not to damage the shield.



13. To remove the LCD Module, keep it on a table by using soft cloth, and flip the LCD frame gently until the LCD Module detaches.

NOTE! Be careful not to damage the sensitive parts. Do not press the LCD module.

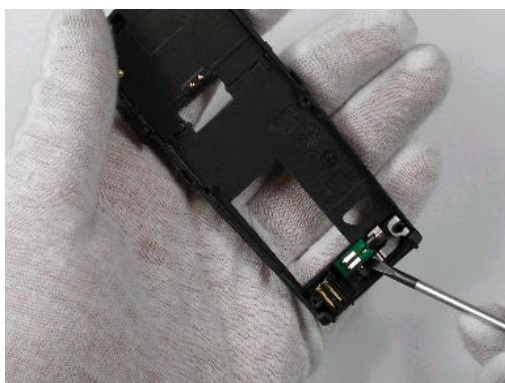


14. Remove the UI Board from the LCD frame.

NOTE! The UI Board is attached into the frame by adhesive tape. Therefore, it may not loose easily. Be careful not to damage the LCD Frame.



15. Remove the Volume Key and the Power Key.



16. Remove the Vibra by lifting it out of its place.

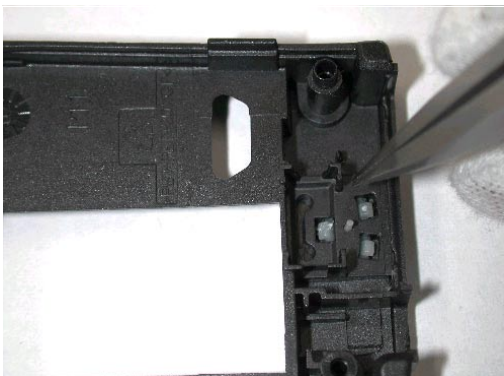


17. Remove the DC Jack by lifting it out of its place

NOTE! Be careful not to damage the C-cover.



18. Lift the Release Spring by tweezers from its place



19. Remove the Release Key by pressing the snaps towards the center from inside.

DISASSEMBLING COMPLETED!

Assembling RH-20

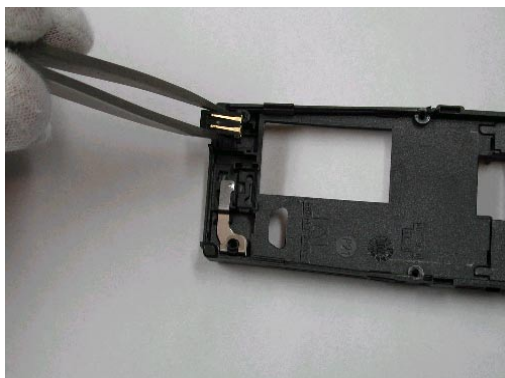
Reassembly takes place in reversed order compared with disassembly.



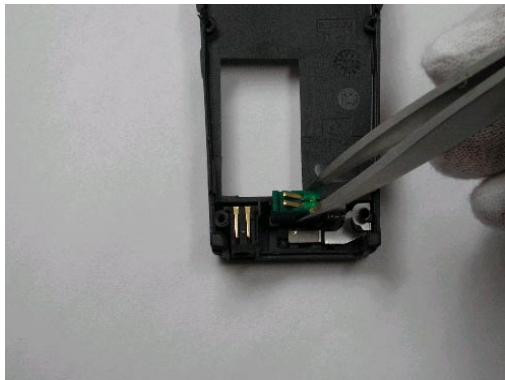
1. Press the Release Key downright into its place.



2. Put the Release Spring into its place.

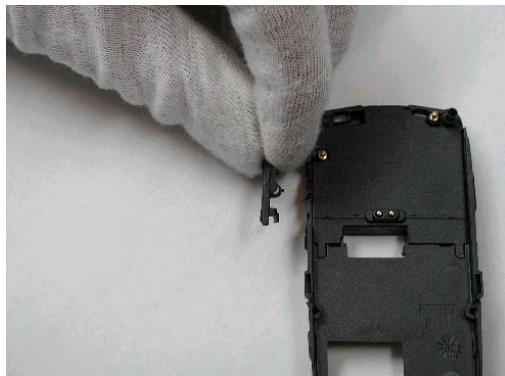


3. Put the DC Jack into its place.



4. Put the Vibra into its place.

NOTE! Avoid touching the spring contacts.



5. Put the Volume Key into its place.

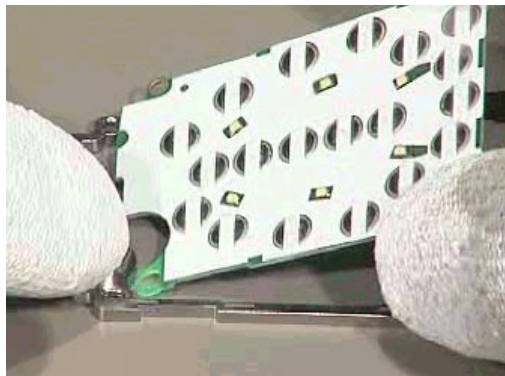


6. Put the Power Key into its place.

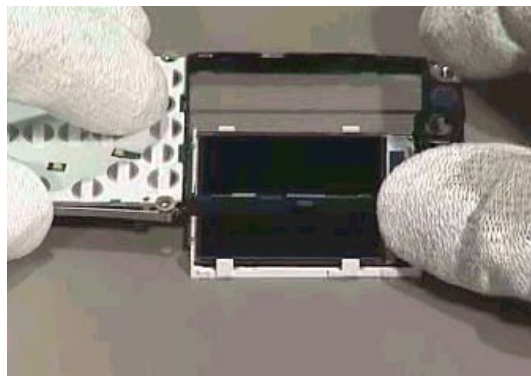


7. Put the Antenna into its place

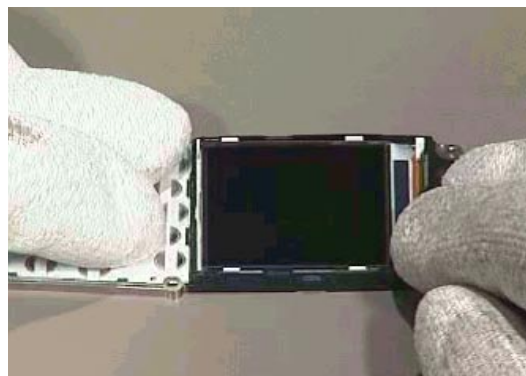
NOTE! Do not touch the inside of the Antenna plate.



8. Put the UI Board into its place.



9. Place the LCD to the UI Frame.



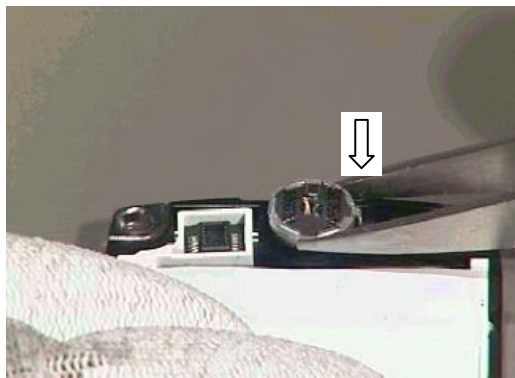
NOTE! Do not press the LCD as it may damage.



10. Fit the Display Shield in its place.



Make sure the shield is properly locked on both sides to the frame.

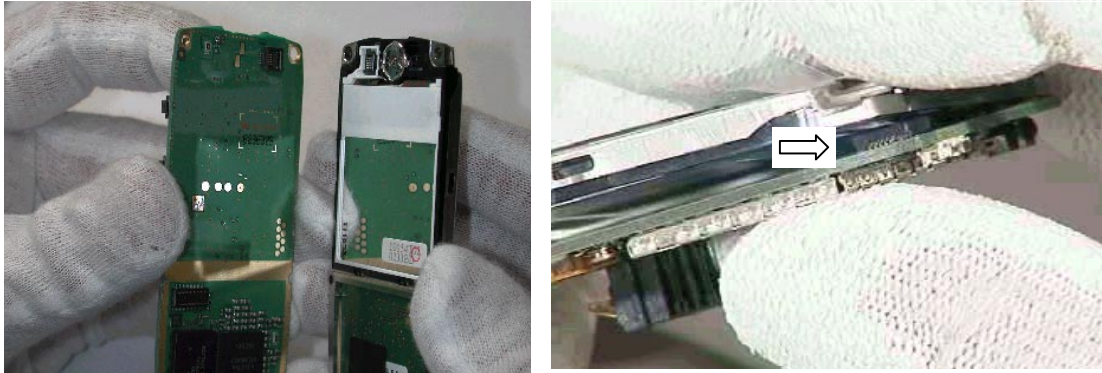


11. Put the Speaker into the frame so that the guiding pin goes into its place.

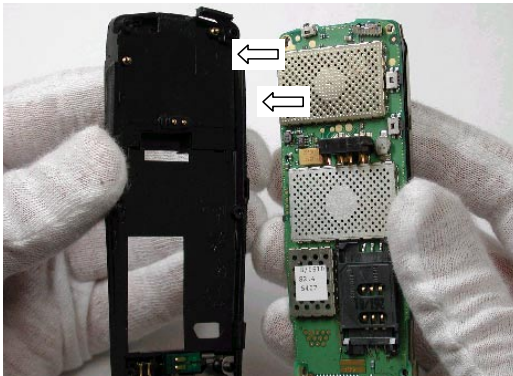


12. Put the Microphone into the frame.

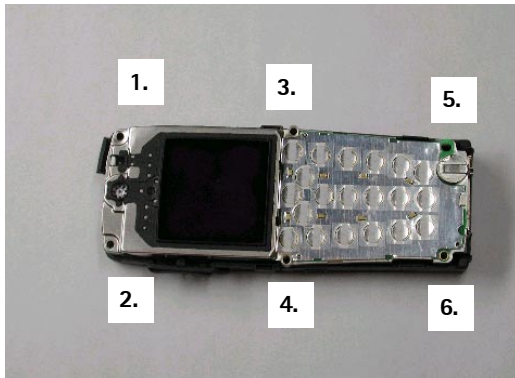
NOTE! Do not touch the spring contacts.



13. Place the UI Module and the engine together by closing the Display connector.



14. Put the unit into the C-cover.



15. Tighten the six screws by using following order.

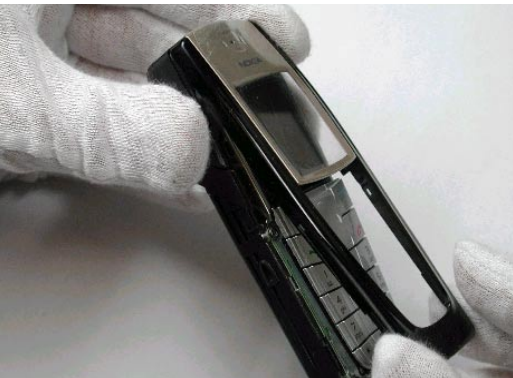
NOTE! Set 20Ncm/650rpm to your Torque driver before tightening.



16. Place the B-cover into its place. Make sure the snaps on both sides are locked to the module.



17. Place the Keymat into its place.



18. Place the A-cover into its place.

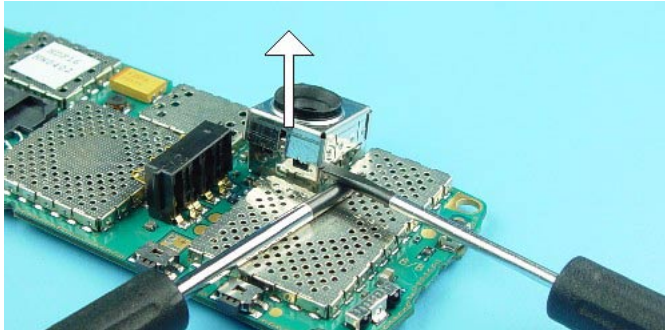


19. Slide the Battery cover into its place until the Release Key locks it.

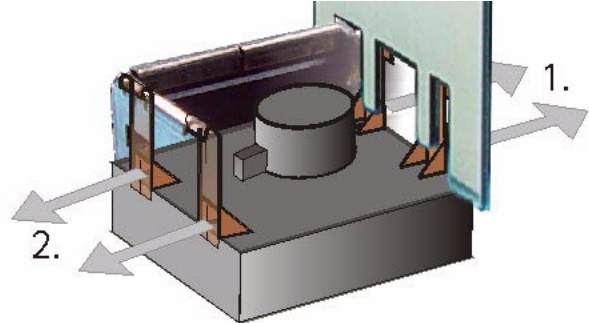


ASSEMBLING COMPLETED!

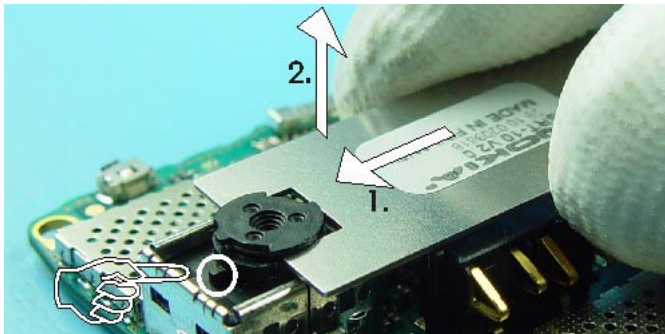
Disassembly and Reassembly Instructions for Camera Module



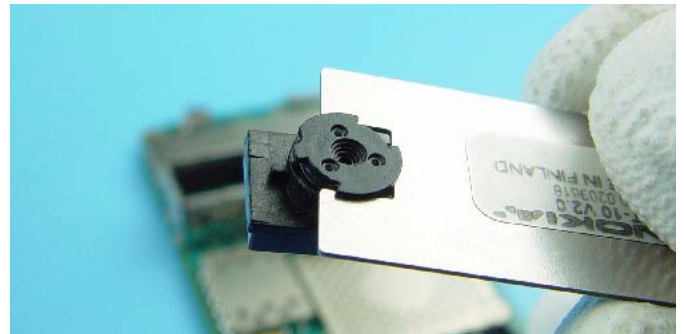
Remove Connector Shield when cleaning contacts or changing Camera Module.



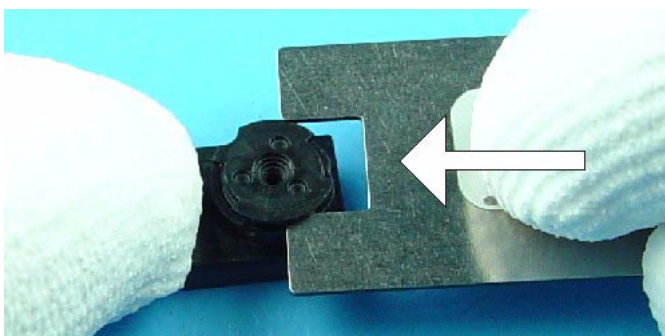
Camera Module is attached with four snaps into its guidance. Place SRT-10 as shown in the picture and unlock the snaps on both sides. Note releasing order.



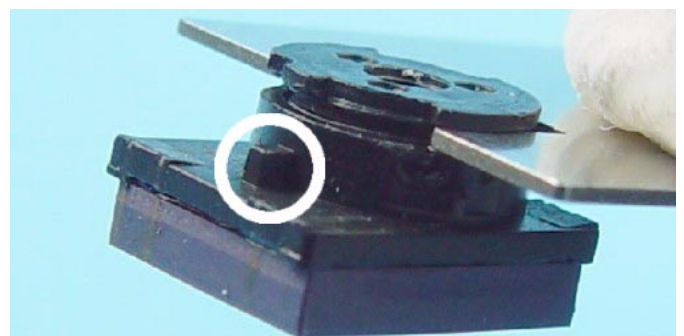
Remove Camera Module carefully. Take care that Camera marking shows to right side when assembling.



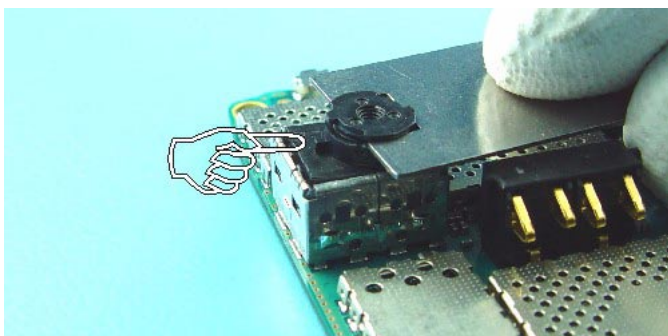
Do not touch contacts and camera lens. Use always SRT-10 for assembly and disassembly.



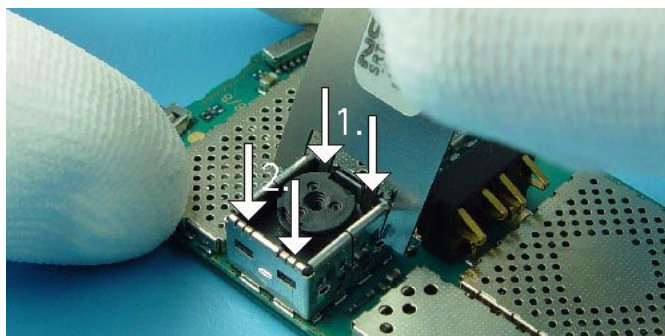
Shift the SRT-10 into the camera groove.



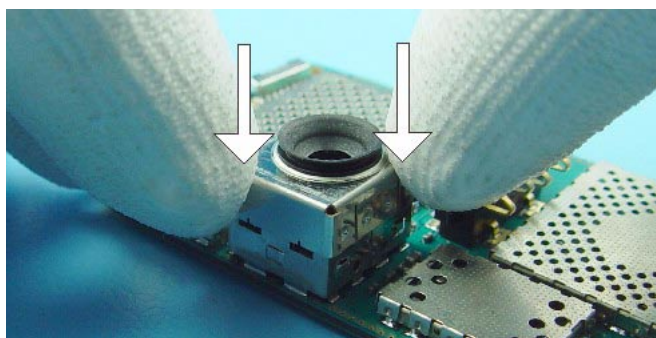
Take the Camera Module carefully and note the marking.



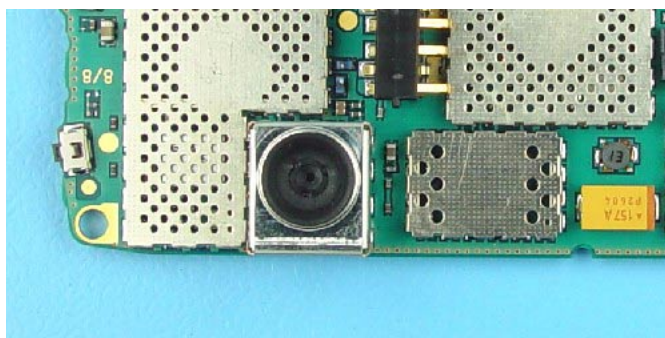
Place Camera Module into its guidance. It is very important to take correct position of the Camera Module to avoid destruction of this device.



Use SRT-10 to lock Camera Module into its guidance. Note locking order.



Put the Connector Shield on the camera guidance and press it down.



Check, that Camera Module is clean. When it is necessary to clean the Camera lens, use compressed air for this procedure only.